

XRD (X-ray diffractometer)

X선 회절기

LynxEye (Linear detector)

Model

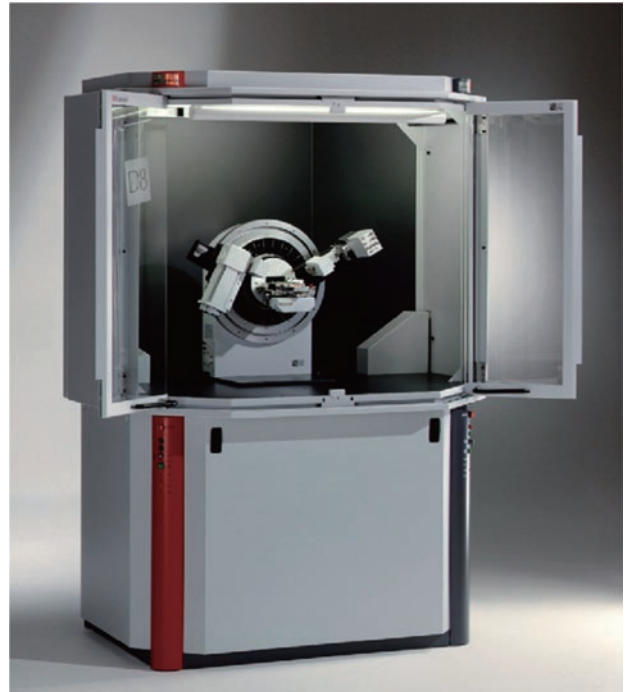
D8 ADVANCE (LynxEye)

Specifications

- Active area : 4° 2theta
- for 401 mm measurement circle diameter
- > 98 % quantum efficiency for Cu-radiation
 - Dynamic range > 7×10^6
 - Maximum global count rate : > 100,000,000 cps
 - Maximum local count rate : 700,000 cps

Applications

- X-ray powder diffraction
 - Lattice parameter
 - Degree of crystallinity
 - Crystallite size and strain
 - Fast phase ID
 - Quantification

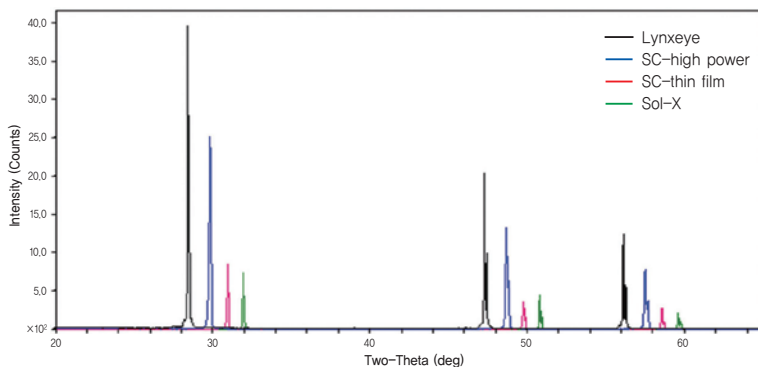
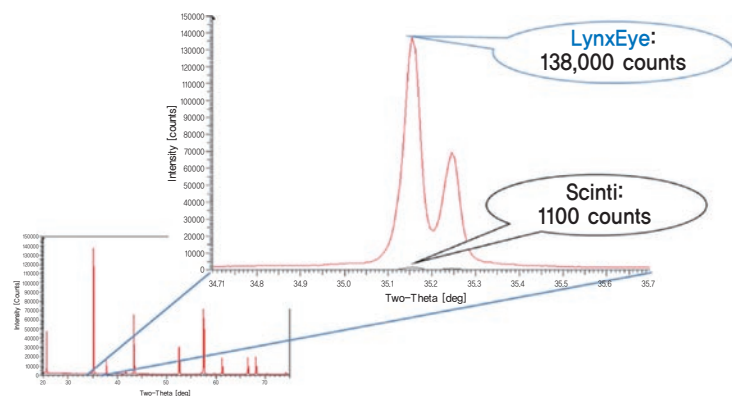


Location L1134 Tel.02-958-5958/5427

Specifications

LynxEye

- Energy dispersive detector
- Fast measurement & high intensity



Fast measurement & high intensity (Si powder)

Lynxeye : Energy dispersive detector
 Scintillation counter : high power(40 kV 200 mA)
 Scintillation counter : high power & thin film optic
 Sol -X : Energy dispersive detector