

In-situ XRD (High & Low temperature XRD)

고-저온 X-선 회절기

Model

X'Pert PRO

Specifications

- Max. power : 2.2 kW
- Output power : 3.0 kW
- High voltage : 60 kV
- Anode current : 60 mA
- Anode materials : Cu
- Temperature control : -198 ~ 1200
- Gas condition : N , Ar , Air , He , Vacuum

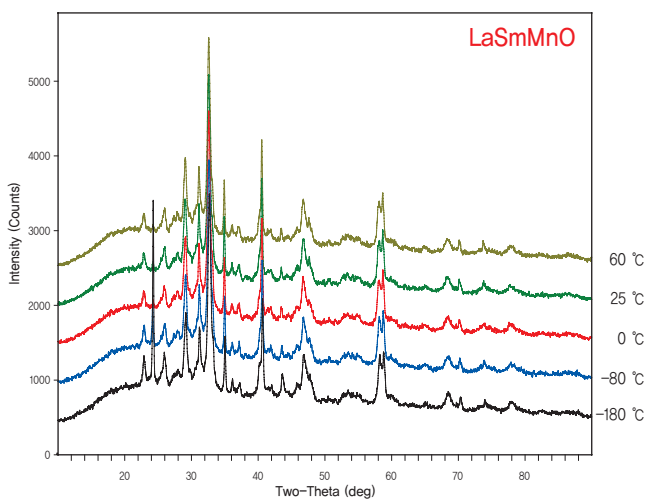
Applications

- X-ray powder diffraction
- In-situ XRD (High & Low temperature)

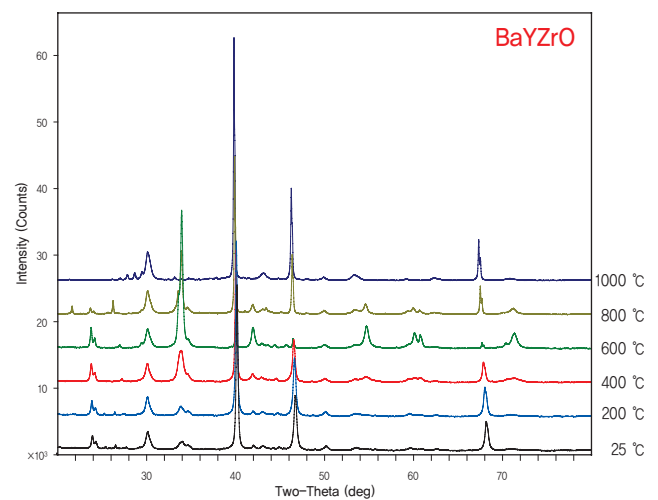


Location L1134 Tel.02-958-5958/5427

Application examples



Low temperature XRD (LaSmMnO)



High temperature XRD (BaYZrO)

Structure analysis in-situ XRD

Analysis thermal expansion (Transition of lattice parameters)
and phase transition (Crystal structure per temperature)