

SAXS (Small-angle X-ray scattering)

소각 X-선 산란장치

Model

SAXSess

Specifications

- X-ray source : Sealed tube
- X-ray optics : Focusing graded multilayer mirror, Line and point collimator
- Sample stage : External vertical and tilt alignment
- Heating/cooling units : -150 °C ... 300 °C
- Accessible q-range : qmin: 0.04 nm⁻¹ to qmax: 27 nm⁻¹

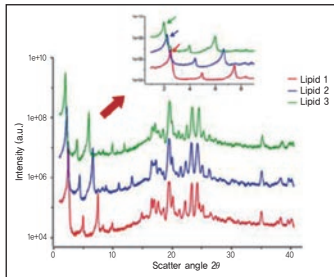
Applications

- Particle shape
- Internal structure of particles
- Surface-to-volume ratio, porosity
- Molecular weight, aggregation number
- Degree of crystallinity
- Particle size distribution

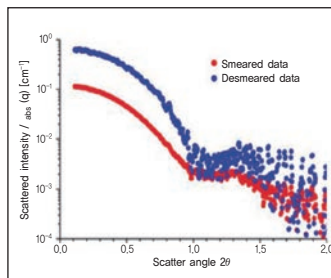


Location L1, 134 Tel.02-958-5958/5427

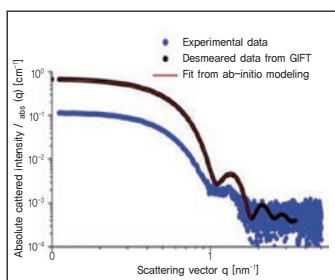
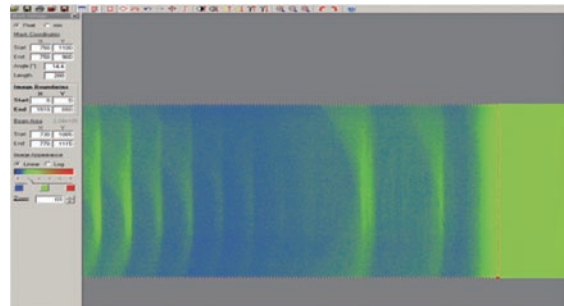
Application examples



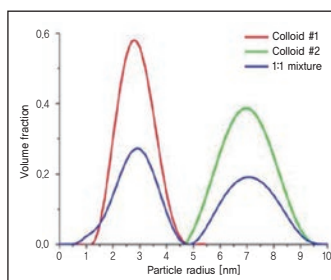
Fast structure analysis



Protein mass determination



Protein shape determination



Volume-weighted distributions

