

# GC-MS (Gas Chromatograph-Mass Spectrometry)

기체 크로마토그래피-질량분석기

Mass spectrometer is used for identification and quantitation of concern-compounds in sample with an intensive preparation. GC/MS provides determination of volatile organic compounds with library search software. GC/TOFMS (Gas Chromatograph and Time-of-Flight/Mass Spectrometer) is diverse and important group of instruments that separate closely related components of complex mixtures in solution (mass deconvolution).

The sample is dissolved in an appropriate solvent to permit the separation on the column and analyzed by mass spectrometer. It is useful for the identification of unknown sample from the fragment ion and library search.

## Model

PEGASUS IV (Leco Corporation, US)

## Specifications

- Ionization Source : Electron Impact
- Mass Range : 30~500
- Injection tools: Headspace

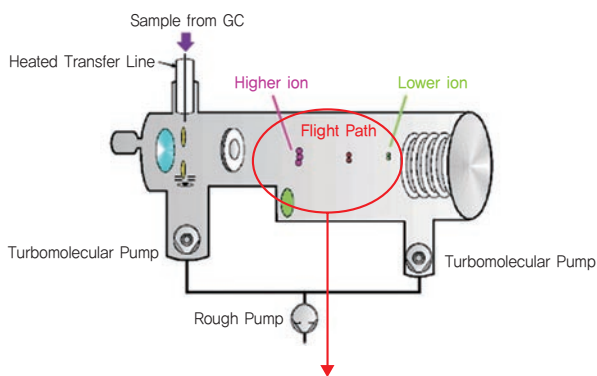
## Applications

- Analysis of organic composition. (liquid, solid, gas)
- Environmental samples (water, soil, detergents)
- Toxic organic compounds in foods

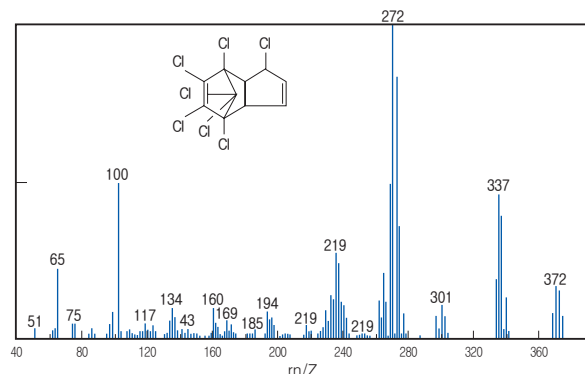
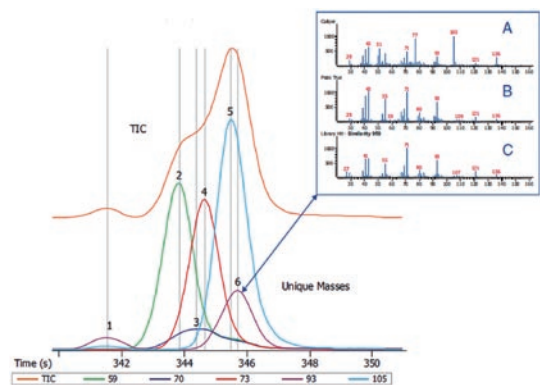
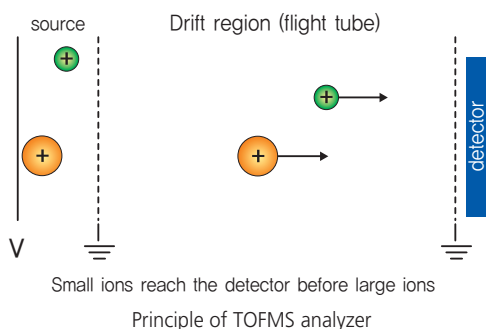


Location L2330 Tel.02-958-5964

### Time-of-Flight Mass Spectrometer (TOFMS)



### Time-of-Flight MS



Mass spectrum of a Heptachlor by GC/MS