

IC (Ion Chromatography)

이온 크로마토그래피

Model

Ion chromatography (Metrohm, Switzerland)
ICS 2100 (Dionex, US)

Specifications

- Flow rate : 0.01 ~ 9.9 ml/min
- Max pressure : 30 Mpa
- Conductivity range : 0.1 ~ 1000 μ S
- Packed-bed suppressor

Applications

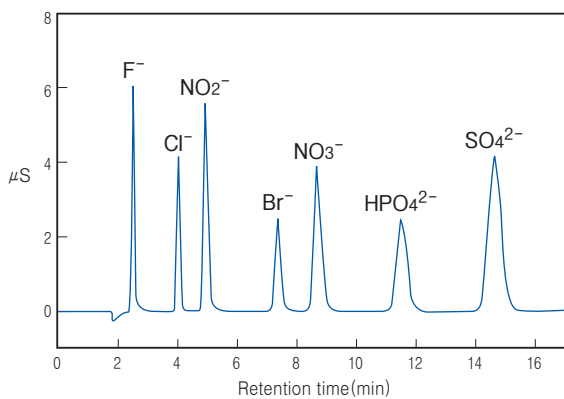
- Differential scanning calorimeter
- Thermogravimetric analysis
- Dynamic mechanical analysis
- Drinking waters, waste waters, precipitates
- Detergents, polymers, residue chlorine



Location L2325 Tel.02-958-5963

Example of anion measurement

| | |
|-----------|--|
| Colum | IonPac AG12A / AS12A |
| Eluent | 2,7mM Na ₂ CO ₃ 2,7mM Na ₂ CO ₃ |
| Flow rate | 1,2mL/min |
| Detection | Conductivity (ASRS Recycle mode) |



Separation mechanism

Anion exchange resin (Latex type)

