

# ICP-SCMS (High Resolution Single Collector ICP-MS)

고분리능 유도 결합 플라즈마 질량 분석기

The unequivocal separation of analyte ions from spectral interferences is a prerequisite of accurate and precise analysis. High mass resolution is the universal means for this separation.



**Location** L2336 Tel.02-958-5968

## Model

ELEMENT 2 (Thermo. US)

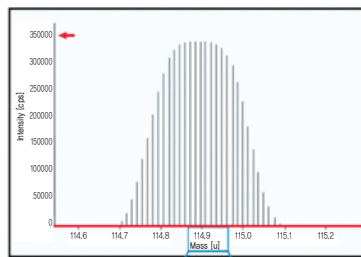
## Specifications

- Sensitivity (Concentric Nebulizer) > 1 x 10<sup>9</sup> counts per second (cps)/ppm In
- Detection Power < 1 ppq for non-interfered nuclides
- Dynamic Range > 10<sup>9</sup> linear with automatic gain calibration
- Power 3-phase, 230/400 V ±10 %, 50/60 Hz fused 32 A per phase, Power consumption: ~9 kVA

## Applications

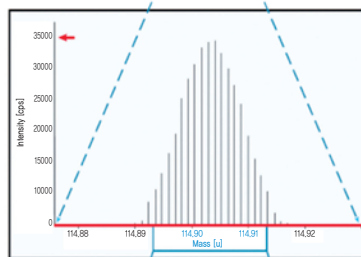
- Multielement analysis across the periodic table covering a mg/L to sub pg/L concentration range
  - Compatible with inorganic and organic solution matrices and solids
- High mass resolution to access spectrally interfered isotopes
  - Produces unambiguous elemental spectra

### Low Resolution



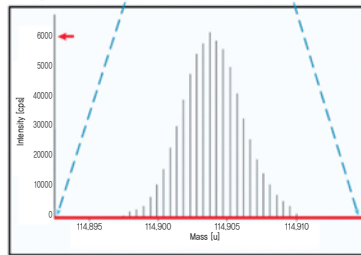
100 ng/L <sup>115</sup>In, Low Resolution

### Medium Resolution



100 ng/L <sup>115</sup>In, Low Resolution

### High Resolution



100 ng/L <sup>115</sup>In, Low Resolution