

DMA (Direct Mercury Analyzer)

자동 수은 분석기

Direct mercury analyzer (DMA) is an instrument for determining the concentration of mercury in a sample.

The DMA can be used to analyze can analyze samples directly without pretreatment. It can be prevent Hg volatilization. The principle is based on EPA method 7473.

Model

DMA 80 (Milestone, Italy)

Specifications

- Light source : low pressure mercury vapor lamp
- Wavelength : 253.65 nm
- Interface filter : 254 nm, 9 nm bandwidth
- Detector : silicon UV photo detector
- Detection limit : 0.02 ng of Hg
- Carrier gas : oxygen

Applications

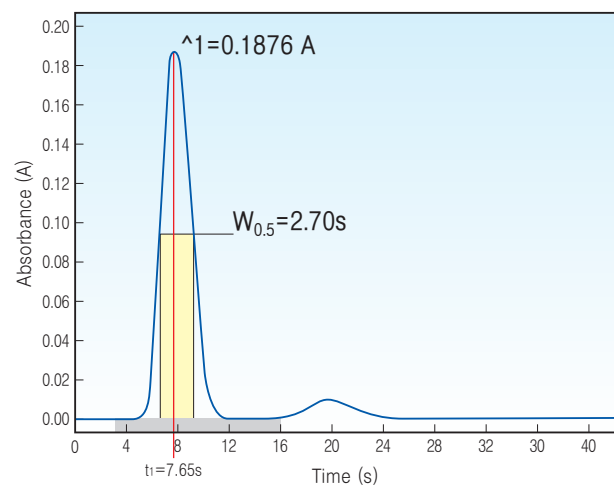
- Solid : deposit, soil, food, Biological, oil, paint
- Liquid : waste, water, urine, blood
- Mineral, environ



Location L2338 Tel.02-958-5967



Autosampler



Spectrum